



[www.cikarangdryport.com](http://www.cikarangdryport.com)

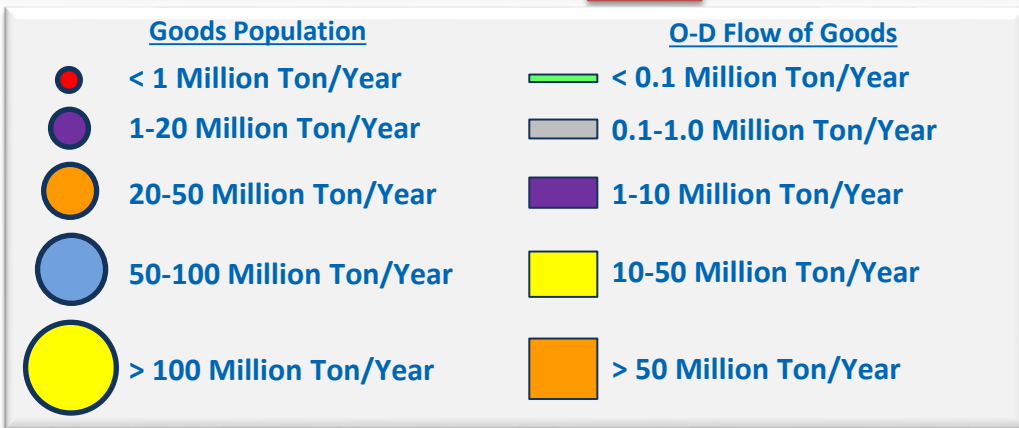
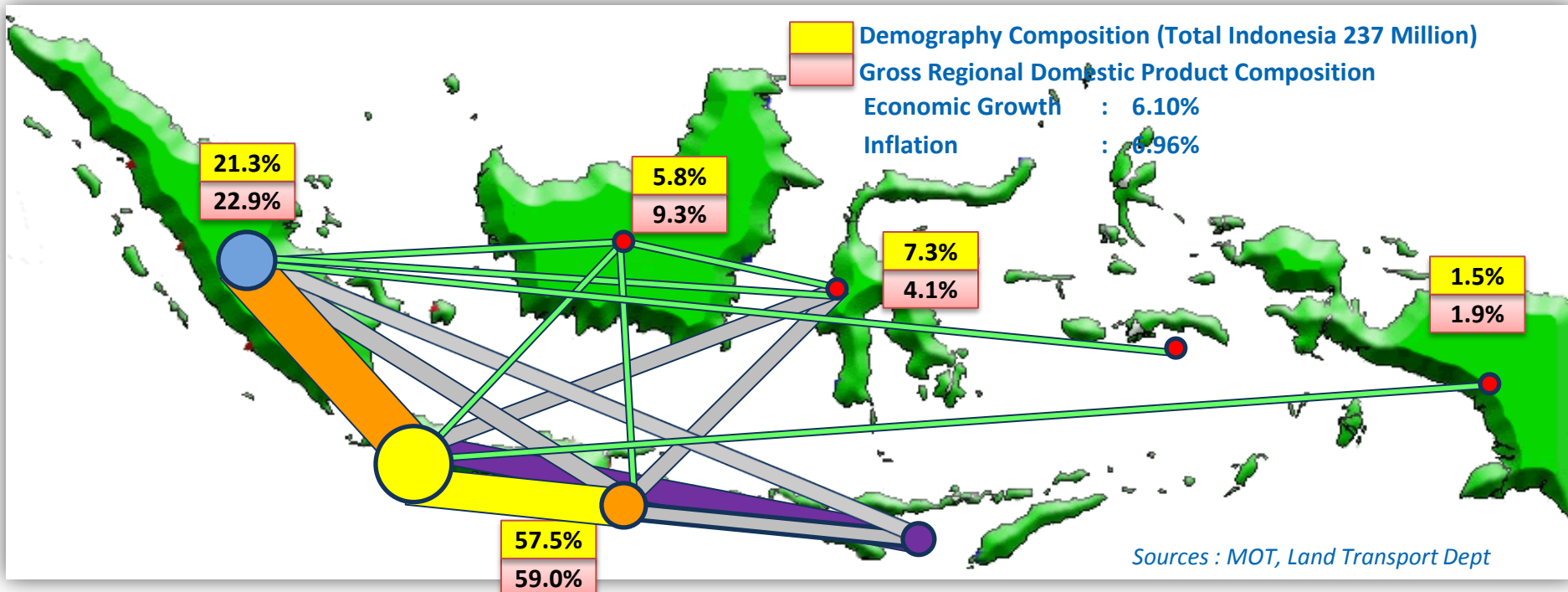
## Intermodal Connectivity through Hub & Spoke

member of





# Why Indonesia Needs Dry Port? (1)



- High density population in Java Island (57.5% equivalent with 136.2 Million)
- Highest goods population and traffict of goods in Java



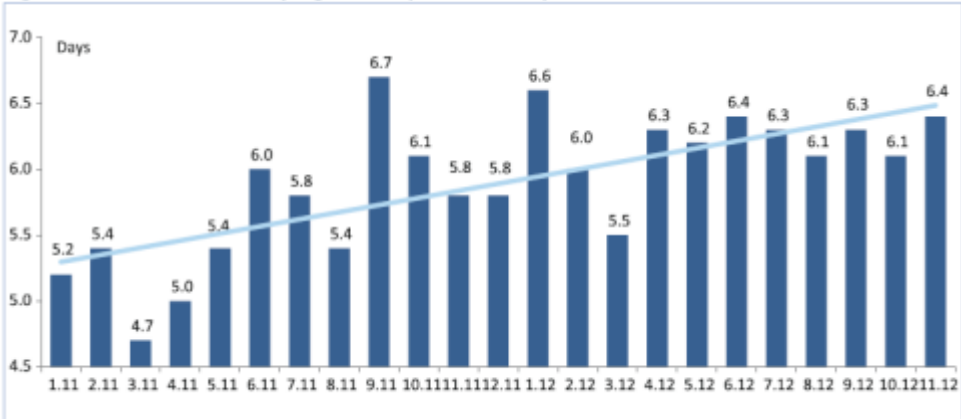
# Why Indonesia Needs Dry Port? (2)

## Current Logistics Condition

- Sea Port Limited Capacity and Dwelling Time
- Inadequate infrastructure (i.e. Access Road, Railway)
- Uncertainty on lead time and cost



### Dwell time at Tanjung Priok in period January 2011-June 2012

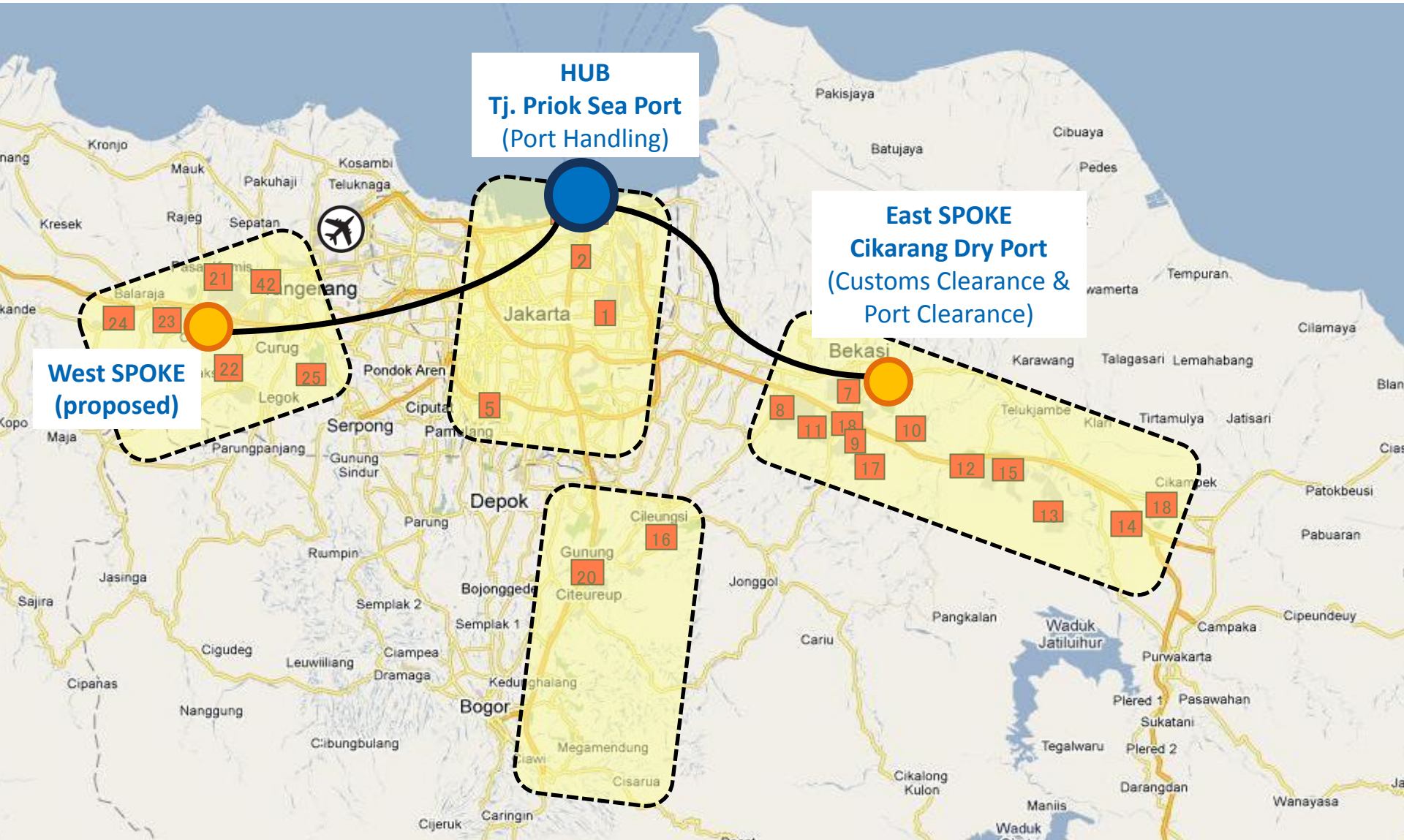


Source: Jakarta International Container Terminal (JICT)

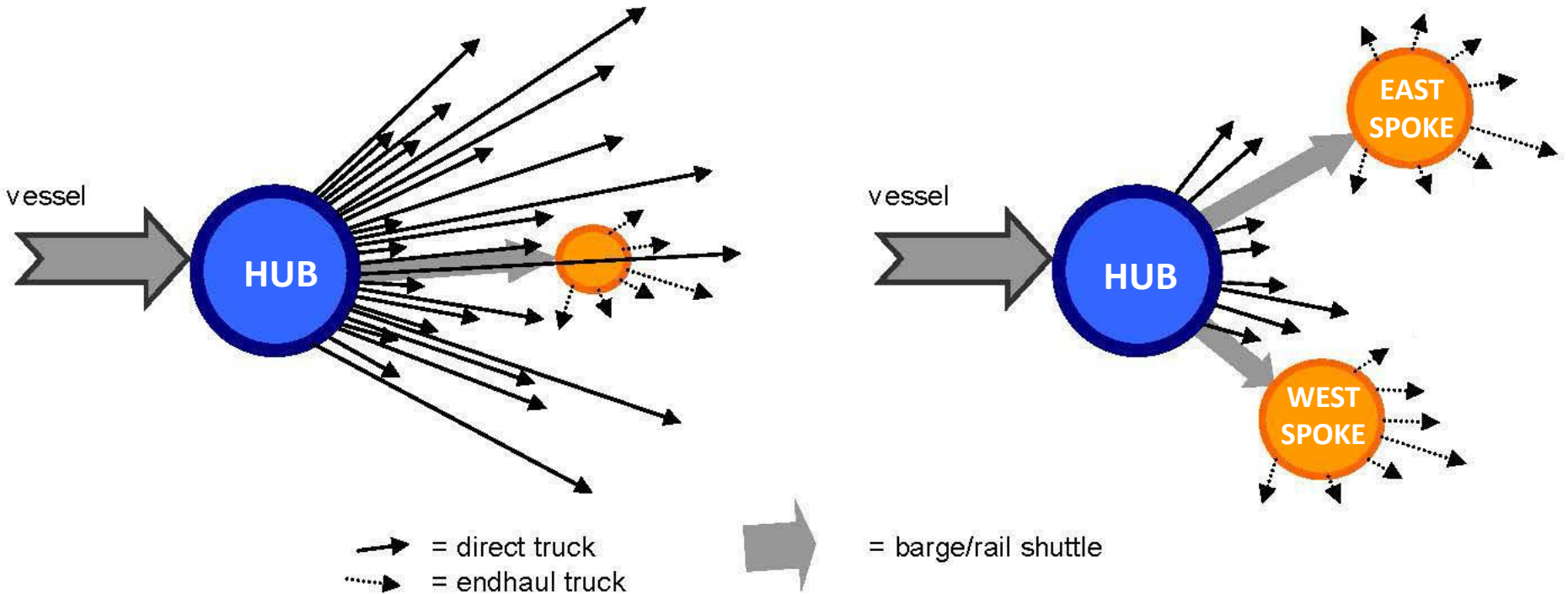
### Logistics Performance Index 2014 (source: World Bank)

Rank	Country	Score
1	Germany	4.12
2	Netherlands	4.05
3	Belgium	4.04
5	Singapore	4.00
25	Malaysia	3.59
35	Thailand	3.43
48	Vietnam	3.15
53	Indonesia	3.08

# Hub & Spoke Concept

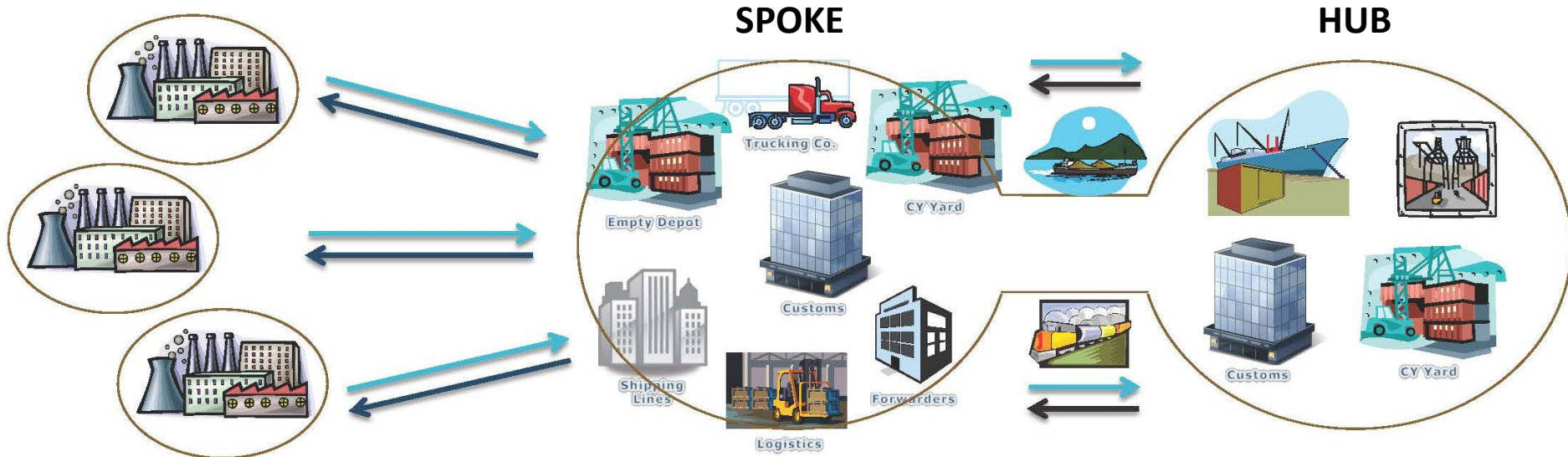


# Transportation Flow

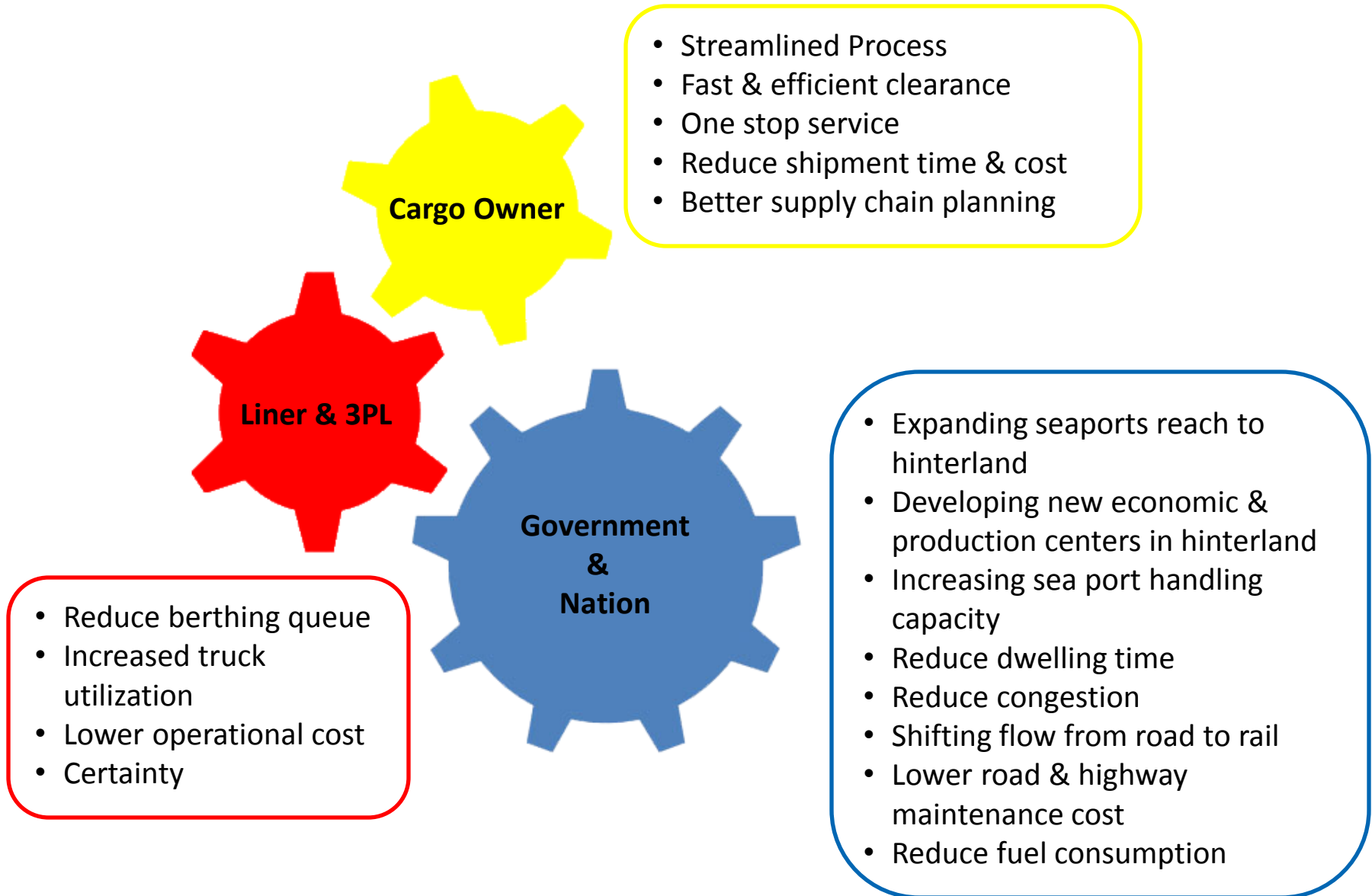


Picture Source: Notteboom, Theo. (2009). The role of dry ports in logistics: towards a terminalization of supply chains. Brugge: ITMMA - University of Antwerp

# Supply Chain via Hub & Spoke



Picture Source: APM Terminal. Lat Krabang Dry Port and Laem Chabang Sea Port Model, Sharing our experience in Thailand.



# Potential Saving & Efficiency

Description	Conventional	Utilizing Hub & Spoke Concept
Dwelling Time	Up to 9 days	Reduced to 2.8 days
Throughput of Seaport	Up to 4 million TEUs per annum	Up to 8 million TEUs per annum
Congestion in Public Road between Sea Port & Industries	High	Reduced 30% or more
Fuel Consumption	Normal	Reduced up to Rp 190 bio per annum
Road & Highway Maintenance	Normal	Reduced up to 30%

# Bird Eye View

200 Ha of fully integrated facilities



## Railway:

- Domestic
- International

Empty Depot

Gate

Office

## Logistics Park

- Warehouses
- TPP

CY

CFS

Physical Check

Reefer

## Port (70 Ha):

- Customs
- Quarantine
- Physical Check
- Container Yard
- Reefer Plugs
- CFS

# Sea Port to Dry Port Connectivity



# Facilities & Services



**Container Yard:** Capacity 400,000 TEUs per annum



**Reefer Services:** 128 plugs, expandable to 500 plugs



**Terminal Operation 24/7**



**Container Freight Station:** Consolidation

# Facilities & Services



**Bonded Trucking**



**Rail Freight Service**



**Shipping Line Representative Office**



**Online Tracking & INSW Connected**



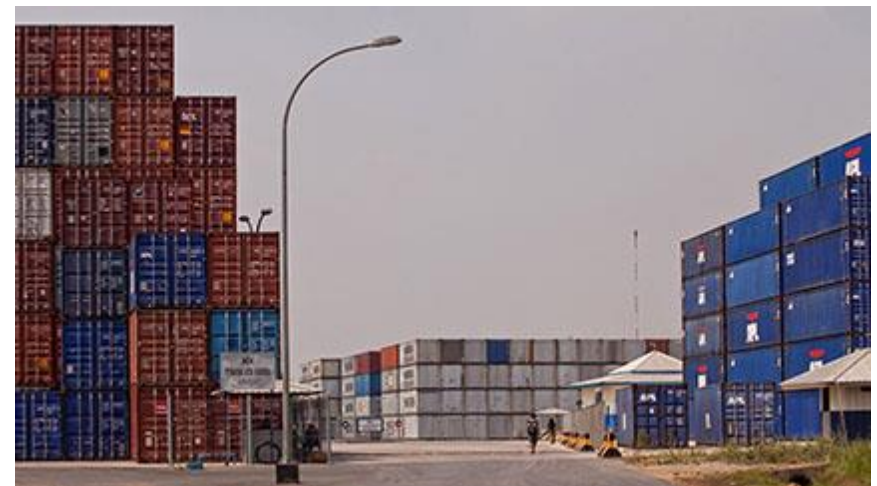
General Warehouse



Special Containers Handling



24/7 Security



Empty Container Depot

# Container Freight Station



## Operator:



**PT MITRA ADIRA UTAMA**

A LICENSED WAREHOUSE PROVIDER

## Benefits:

- Direct Bill of Lading through Cikarang Dry Port
- Certainty, traceability, profitability
- Better, cheaper & faster overall logistics cost
- Integrated customs and quarantine inspection
- Seamless supply chain process
- Integrated Port & Logistics Facilities

Consolidation service are served by:

**Kurhanz Trans**





- Joint Physical Inspection Inside Terminal
- 24/7 Customs and Terminal Operation
- Animal Quarantine, Plant Quarantine and Fish Quarantine available

# Direct Shipment

Multimodal Transport Bill of Lading  
Through Cikarang Dry Port  
Port Code : **IDJBK**



Direct export import through Cikarang Dry Port are served by:





# Program : Dry Port to Dry Port



## Benefits

- **Expand and Explore the market**  
Connecting strategic industrial zones and getting closer to the markets
- **One Stop Service Solution**  
Port, Customs, and Quarantine are located and integrated in the same area
- **Better Visibility and Certainty**  
Predicted lead time and cost using Multimodal Transport Bill of Lading
- **Faster Transit Time**  
6 days total lead time Lat Krabang – Cikarang including 3 days sailing time

## In Cooperation With



- Service First
- Customer's Satisfaction is Our Priority
- Fastest Transit Time in The Market

# Stakeholders and Customers

<p>Terminal Operator (4)</p>	 <p>Jakarta International Container Terminal PT Mustika Alam Lestari</p> <p>TPK KOJA KOJA CONTAINER TERMINAL IPC Terminal 3</p>	<p>Land Transporter (3)</p>	 <p>IRON BIRD TRUCKING</p> <p>pdt</p> <p>LOGISTICS+ "Passion for Excellence"</p>
----------------------------------	--	---------------------------------	---

<p>Logistics Service Provider (30+)</p>	
---	---

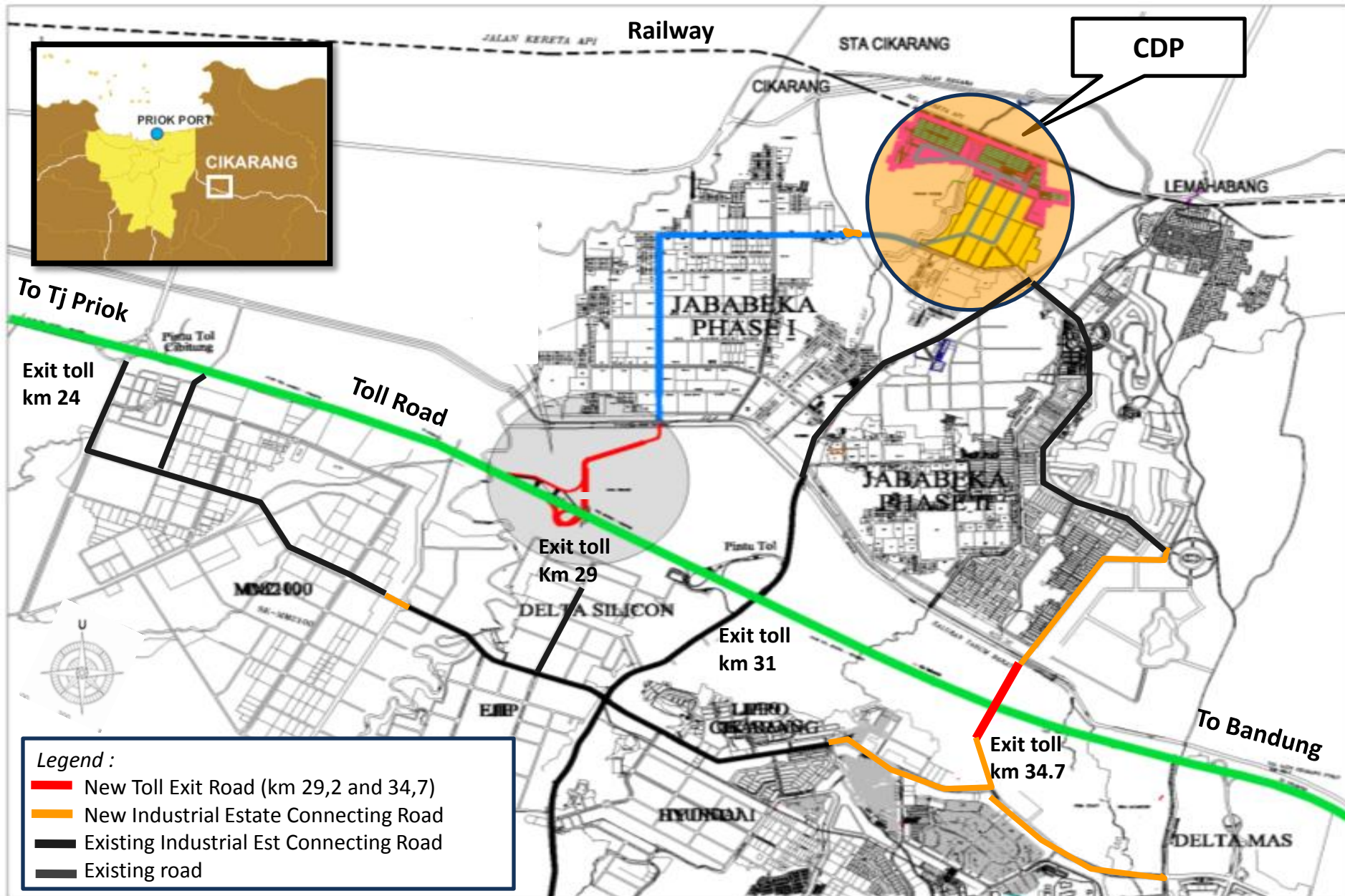


# Stakeholders and Customers

Shipper  
Consignee  
(300+)

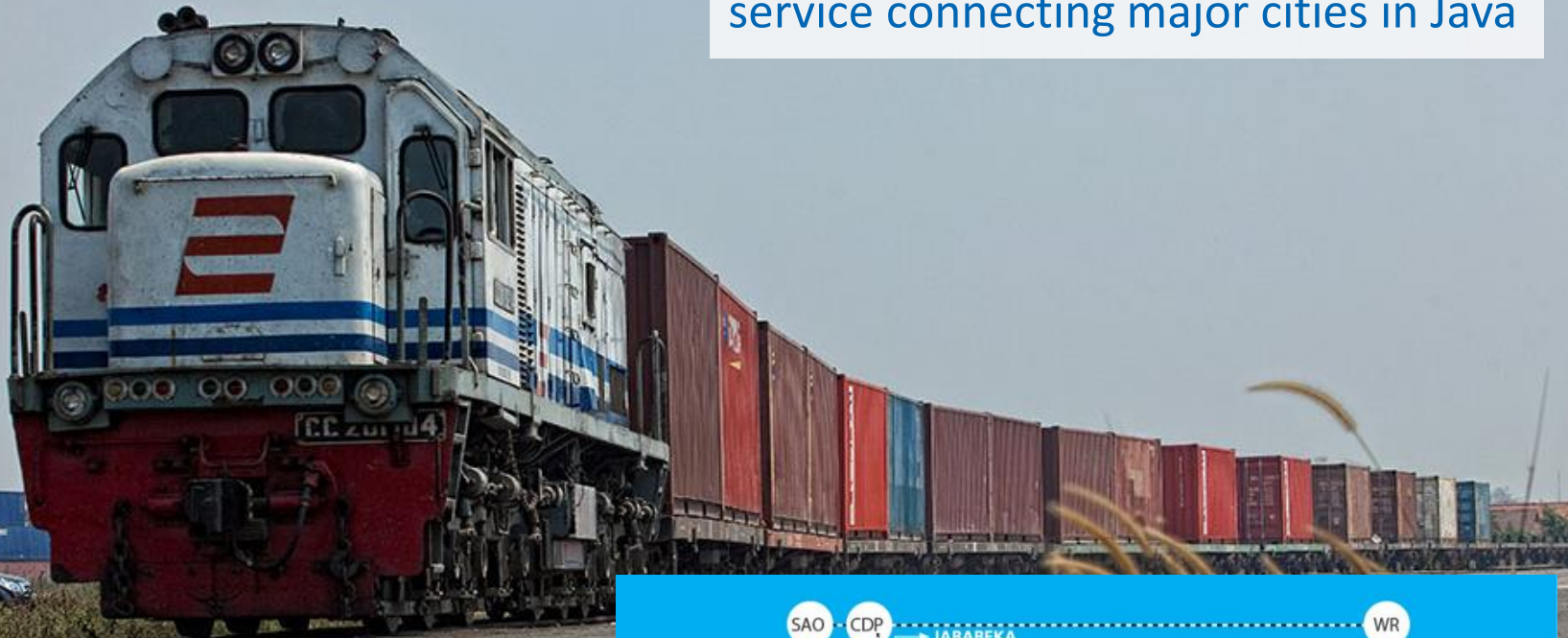


# Infrastructure Development



# Domestic Rail Freight Service

Provides premier hub of rail freight service connecting major cities in Java



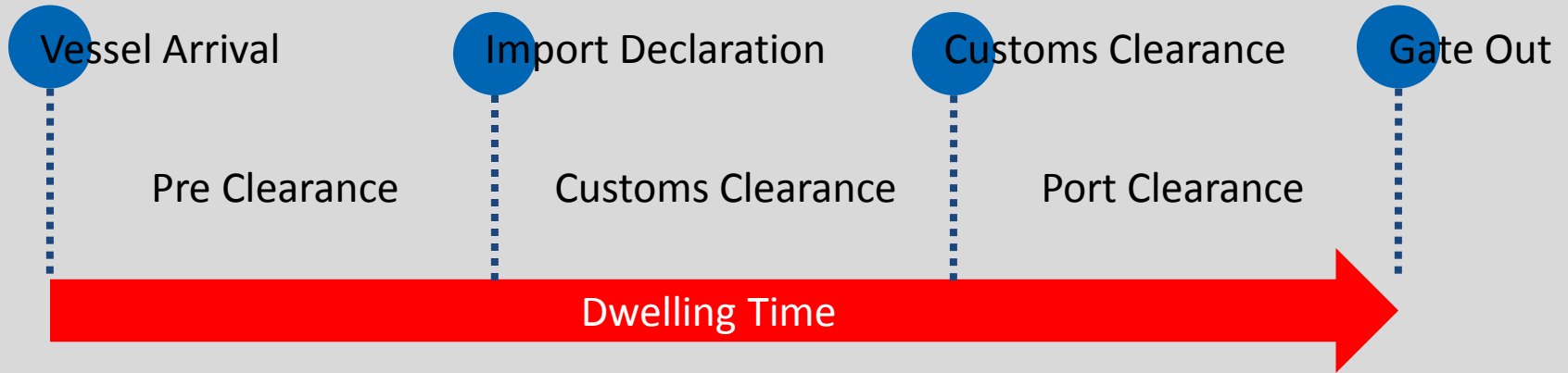




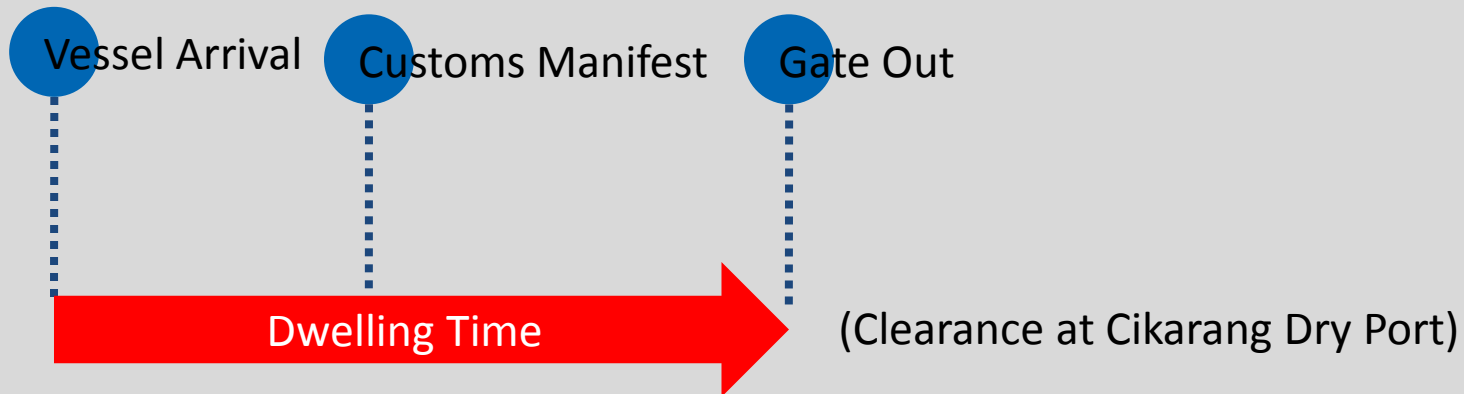
# Role of CDP on Sea Port Dwelling Time



## Dwelling Time - Imports through Tanjung Priok



## Dwelling Time - Imports through Cikarang Dry Port



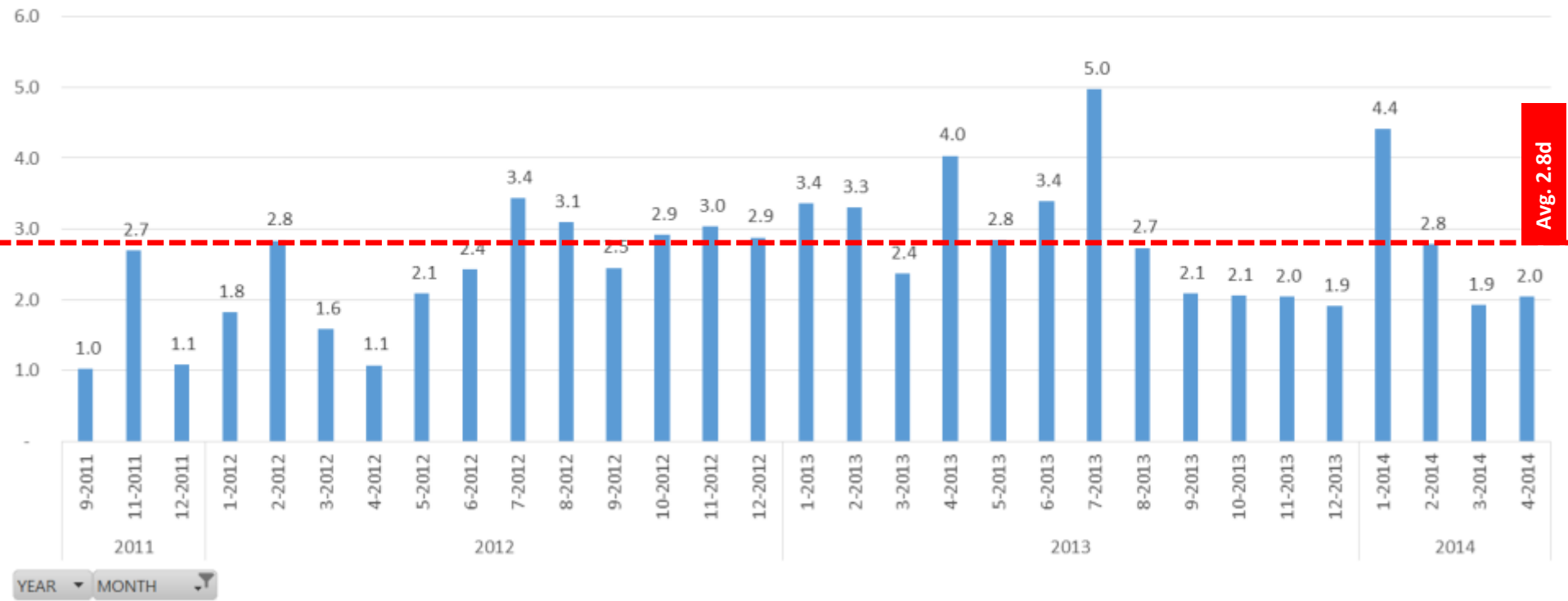


# Role of CDP on Sea Port Dwelling Time

Average of DT-TO

### Tg Priok Dwelling Time for CDP Import

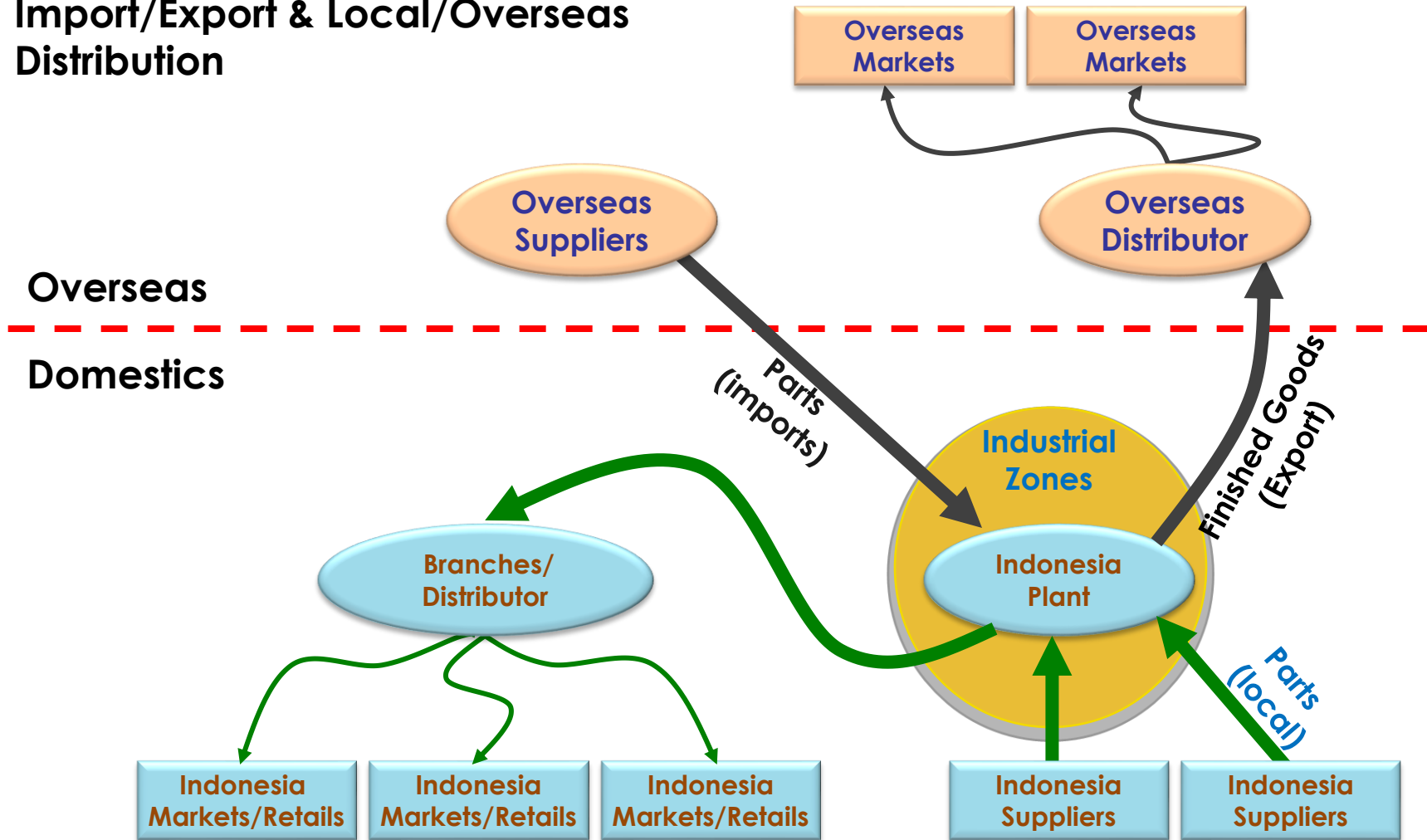
Combine BC11 & BC12, 2011-2014, Avg. 2.8 days



- Average Dwelling Time at Tanjung Priok for container destination CDP are **2,8** days

# Role of Cikarang Dry Port

## Import/Export & Local/Overseas Distribution



# Role of Cikarang Dry Port

- **Accelerating flow** of imported and local raw materials to factory and flow of finished goods from factory to overseas or local markets.
- **Increasing productivity and competitiveness level** for industrial manufacturing around Bekasi-Cikampek Toll corridor.
- **Supporting MPPEI 2011-2015** (Masterplan Percepatan & Perluasan Ekonomi Indonesia) Corridor Economic II as driver on national industry and services
- Planned to be AEO (Authorized Economic Operator), supporting trade facilitation within the region.

# 2014年亚太经合组织 APEC CEO SUMMIT

中国 北京 2014年11月8日-10日 Beijing

## INDONESIA PORTS EXISTING & POTENTIAL

- ★ Existing main ports
- ★ Potential ports



Existing main ports include Jakarta, Surabaya, Semarang, Balawan, Makassar, Bitung, and Cikarang Dry Port (via Jakarta)



“This is your Opportunity” (Joko Widodo – President of Indonesia)

 ... a change is happening

A MILESTONE for **better logistics** and  
**supply chain** activities in **Indonesia**



2011

2015

 **Contact Us**

# GERBANG CIKARANG DRY PORT

6°16,07' LS: 107°09,87' BT



Jl. Dry Port Raya, Kota Jababeka, Cikarang,  
Bekasi 17530, West Java, Indonesia



+6221 2908 2908



[www.cikarangdryport.com](http://www.cikarangdryport.com)

**PT. Cikarang Inland Port**



[marketing@cikarangdryport.com](mailto:marketing@cikarangdryport.com)



[@CikarangDryPort](https://twitter.com/CikarangDryPort)



[Cikarang Dry Port](https://www.facebook.com/CikarangDryPort)

**Join port and maritime leaders from  
across Southeast Asia at:**



# **Port Development & Connectivity Asia**

**20 - 23 October 2015, Singapore**

**Click Here to Download  
Brochure**